



// ONE BRAND // ONE SOURCE // ONE SYSTEM



// SERVICE // MATERIAL PROCESSING // SURFACE PROTECTION // AUTOMOTIVE

**REMA TIP TOP**

Belt Cleaning Systems/Spillage Control - UK Products





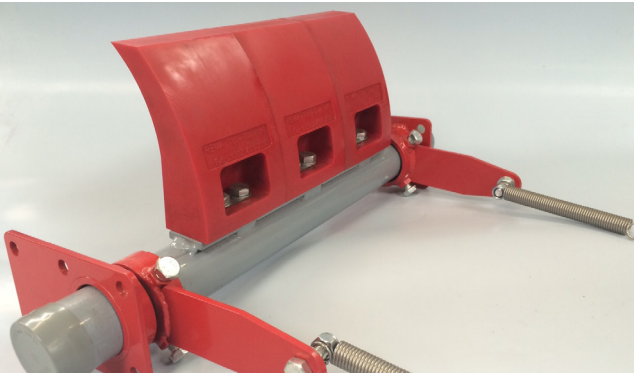
BELT CLEANING SYSTEMS  
REMACLEAN A3000

REMACLEAN A3000  
PRIMARY PU AND TC BELT CLEANER

Primary belt scraper system with segmented polyurethane or Tungsten carbide blades and spring lever tension unit for cleaning of conveyor belt top covers at the head pulley

Advantages

- Superior cleaning performance
- The polyurethane blades optimally adjusts to the belt surface and guarantees effective cleaning
- Long service life is achieved by using highly wear resistant polyurethane material
- Suitable for use with mechanical fasteners
- Easy installation and adjustment, the spring lever tension unit requires minimum maintenance
- Uniform and optimal contact pressure is easily set

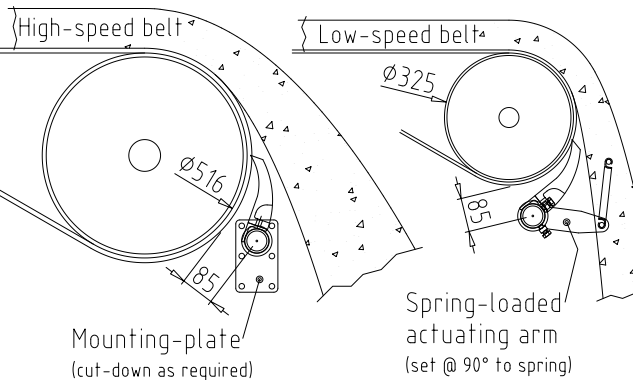


REMACLEAN A3000 PRIMARY PU AND TC BELT CLEANER

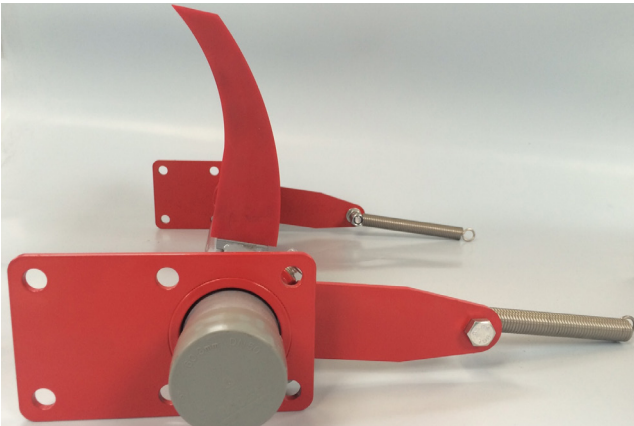
The REMACLEAN A3000 system acts on the belt whilst in contact with the discharge drum, just after the point where the conveyed product leaves the belt. It removes the fines which otherwise stick to the belt and fall under the conveyor. A very high proportion of adhered material is immediately returned to the main material flow. The standard blade is constructed of polyurethane segments mounted onto a support beam.

A spring torsion arm design provides a 'fail-safe' suspension system for the primary blade. This design protects the belt from damage – a common and dangerous problem with many scrapers used in this position on conveyors.

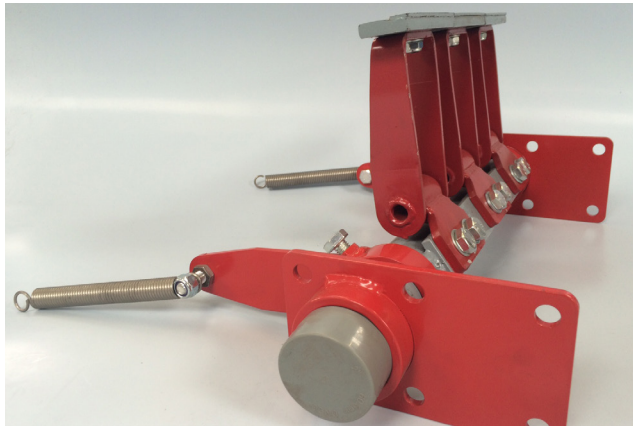
Should any object or belt surface defect impact on the blades the spring torsion arms deflects the blade away from the belt surface – this enables tungsten carbide tipped primary blades to be used safely on conveyors carrying abrasive materials.



TYPICAL POSITIONS TO AVOID MATERIAL FLOW



REMACLEAN A3000 PRIMARY PU AND TC BELT CLEANER



REMACLEAN A3000 PRIMARY PU AND TC BELT CLEANER

BELT CLEANING SYSTEMS  
REMACLEAN - Scraper Rubber

REMACLEAN CAB GREEN

Three-ply combi scraping rubber (CAB) with wear-resistant outer layer and elastic inner layer. The combi scraper rubber may protrude from its support up to 1.5 times its thickness.

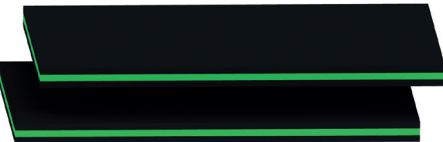
Properties

- Excellent wear-resistance
- Very belt-friendly
- Low friction on conveyor belt
- Different thicknesses available from 15 - 50 mm
- Widths up to 2 000 mm available

- Designed for service temperatures from -40 °C to +70 °C

Area of application

- Universally applicable as scraper for granular, slightly sticky and moist material



REMACLEAN CAB GREEN

REMACLEAN CAB GREEN

Minimum order from 30 mm thickness: 1 roll, 2 000 mm wide. Roll can be cut into strips upon request.

Specifications

Polymer basis	NR/BR	DIN ISO 1629
Specific weight	1.21 g/cm³	DIN EN ISO 1183-1
Hardness	69/51/69 Shore A	DIN ISO 7619-1
Colour	Black/Green/Black	

BELT CLEANING SYSTEMS  
REMACLEAN HM U6 Secondary Scraper

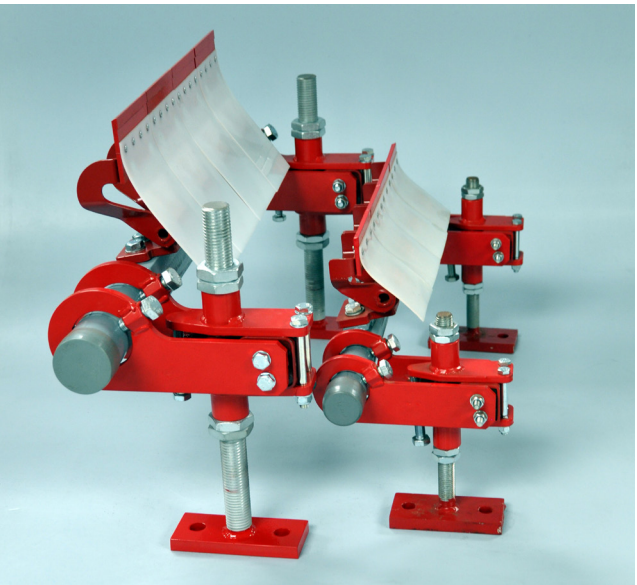
REMACLEAN HM U6  
Secondary scraper

**REMACLEAN HM-U6 Secondary Scraper – A1000 - Compact**  
Remaclean HM-U6 Compact Secondary Scraper with Fixed or Torsion Mounts For Belt Widths: 300mm – 900mm

**REMACLEAN HM-U6 Secondary Scraper - A2000-A**  
Remaclean HM-U6 A2000 Secondary Scraper with Fixed or Torsion mounts For Belt widths: 300mm – 1200mm

**REMACLEAN HM-U6 Secondary Scraper - A2000-B**  
Remaclean HM-U6 A2000 Secondary Scraper with Fixed or Torsion mounts For Belt widths: 1350mm – 1500mm

**REMACLEAN HM-U6 Secondary Scraper - A2000-C**  
Remaclean HM-U6 A2000 Secondary Scraper with Fixed or Torsion mounts For Belt widths: 1650mm – 2000mm



REMACLEAN HM U6

BELT CLEANING SYSTEMS  
REMACLEAN HM U6 Secondary Scraper, REMACLEAN TMB

REMACLEAN HM-U6

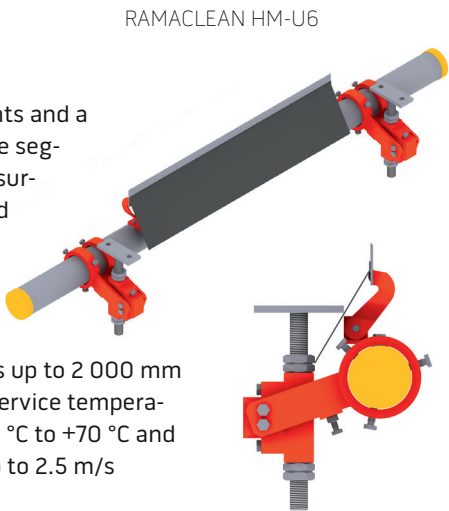
Belt cleaning system for return side application with elastically mounted carbide segments and a torsion tension unit with spindle adjustment. The individual elastically supported carbide segments achieve optimum cleaning efficiency while avoiding damage to the conveyor belt surface. The segments dynamically adjust to the belt surface and hence ensure effective and belt-friendly cleaning. Plastic skirts prevent that material builds up on the elements.

- Properties**

  - Belt-friendly cleaning achieved by the sagging function of the blade segments
  - The tungsten carbide segments are individually supported and can adapt dynamically in the running direction of the belt
  - Modular system composed of system suspension tube, carbide-blades, polyurethane deflector
- Spindle sets with torsional thrust bearing included
  - Consistent and ideal contact pressure, which is easily adjustable by using the torsion tension unit with spindle adjustment
  - Particularly robust polyurethane sliding deflectors for highest demands
  - Not suitable for reverse operation
- For belt widths up to 2 000 mm
  - Designed for service temperatures from -40 °C to +70 °C and belt speeds up to 2.5 m/s

**Area of application**

- Universally applicable to many types of materials such as sand, gravel, hard coal, lignite, ores, sinter, cement, clay, conditioned refuse and gypsum



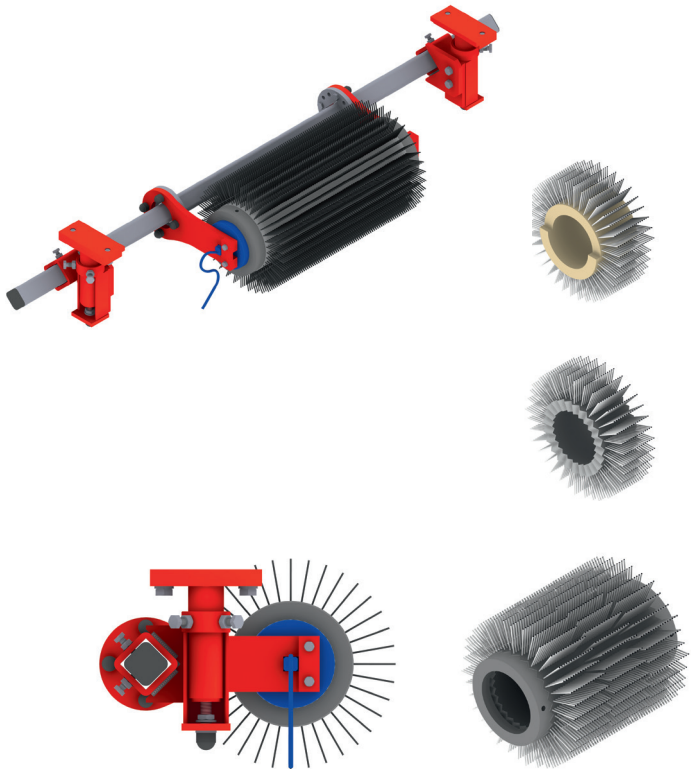
REMACLEAN TMB

REMACLEAN TMB is a conveyor belt cleaning system with plastic bristles and internally located drive for fine cleaning of the conveyor belt carrier-side.

- Properties**
- Cleaning brush with direct electric motor drive
  - Highly flexible and extremely gentle on the belt due to plastic bristles
  - Drum motor: 400 V, 50 Hz (other versions available on request)
  - Motor capacity BB 400 - 800: 1.1 kW
  - Motor capacity BB 900 - 2 000: 1.5 kW
  - Self-cleaning
  - Very compact construction through the drum motor
  - All electric motors fall into protection class IP66
  - Also available in version suitable for use in ex-zones (Device Group II Category 3D T135 °C) also available for food processing and in an oil resistant version
  - Available with stainless steel motor
  - Suitable for reverse operation; the motor must be switched over to correspond with the direction of operation
  - Designed for service temperatures from -40 °C to +70 °C and belt speeds up to 6.5 m/s

**Area of application**

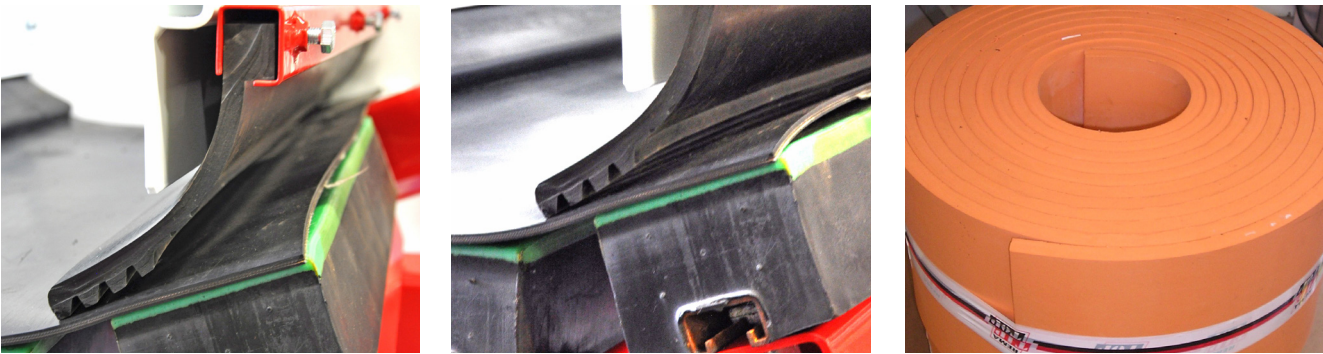
- Universally suitable for removing fine and pulverised as well as slightly adhering materials; to be combined with a pre-scraper for moist materials.



SPILLAGE CONTROL EQUIPMENT  
REMASKIRT Sureseal skirting system

REMASKIRT SURESEAL SKIRTING SYSTEM

- REMASKIRT Sureseal**
- REMASKIRT Sureseal sealing profile with matching mounting rails for your conveyor belt. Excellent sealing properties particularly in connection with REMASLIDE impact bars. The special sealing lips with their labyrinth effect keep transported material on the conveyor belt and reduce contamination and loss of material. The sealing lips are held down on the conveyor belt by their own weight, thus preventing damage.
- REMASKIRT - SureSeal Skirting Rubber Properties**
- Easy fitment in combination with the mounting rails
  - Designed for temperatures from -40 °C to +80 °C
  - Sealing lips with labyrinth effect
- Area of application**
- Skirting rubber seal for conveyor belts transporting fine-grained and dusty material
  - Proven especially useful for conveying coal



REMASKIRT Sureseal skirting system

REMASKIRT 50

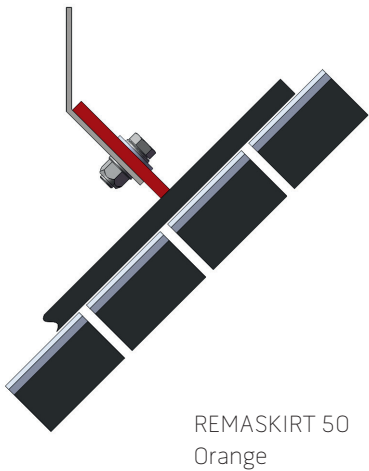
REMASKIRT 50

High-quality skirting rubber made of natural rubber with high tensile strength. Excellent sealing properties particularly in connection with REMASLIDE impact bars.

- Properties**

  - Low friction
  - Easy fitment
  - Available in thicknesses from 8 to 30 mm and belt widths from 100 to 1 800 mm
  - Special qualities available on request
- Designed for temperatures from -40 °C to +80 °C
- Area of application**

  - Skirting rubber and scraper for wet, sticky material



REMASKIRT 50 orange

Specifications		
Polymer basis	NR	DIN ISO 1629
Specific weight	1.11 g/cm³	DIN EN ISO 1183-1
Hardness	51 Shore A	DIN ISO 7619-1
Colour	Orange*	

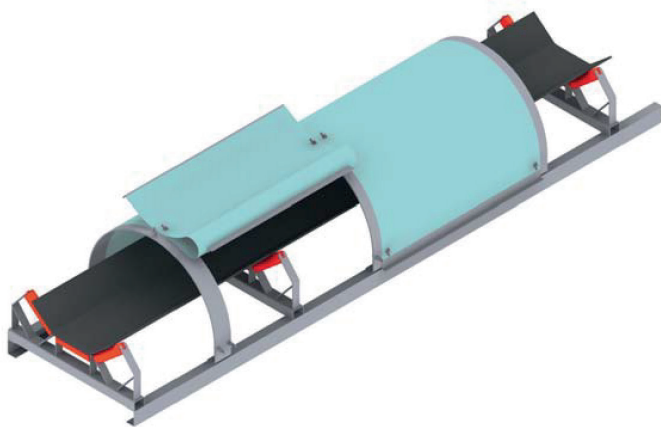


SPILLAGE CONTROL EQUIPMENT  
REMADUST CCS (Conveyor Cover System)

REMADUST CCS (Conveyor Cover System)

REMADUST CCS

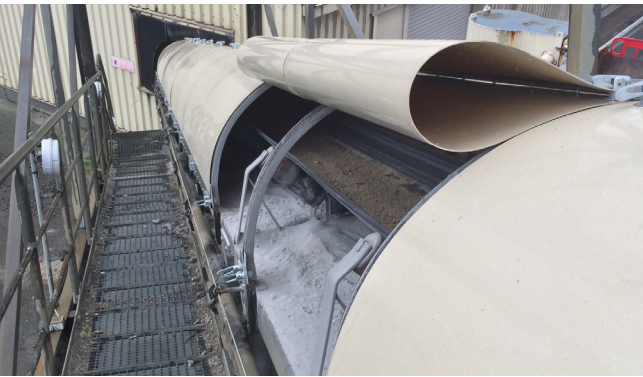
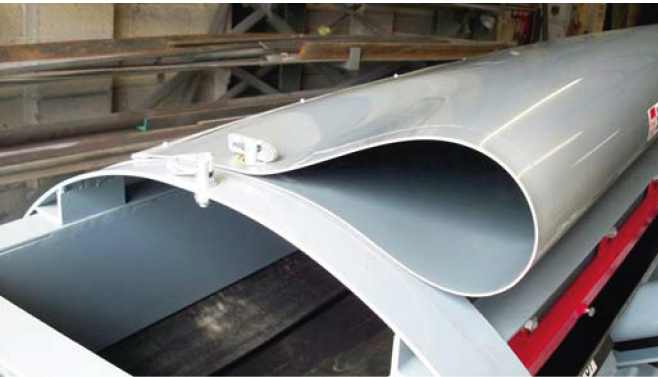
The REMA TIP TOP cover system offers a fast and effective solution for the enclosing of conveyor belt installations. Its simple construction permits it to be fitted just as easily to existing systems installations as to new ones. The frame is simply clipped or screwed to the conveyor belt structure and the plastic cover which sits on top completely covers the conveyor belt. This effectively prevents loss of material due to wind and the material being transported is protected from the effects of weather.



REMADUST CCS (Conveyor Cover System)

Properties Mounting frame:

- Zinc-plated metal bows for frame
- UV-stable and resistant to environmental influences
- Standard material, suitable for use down to -20 °C
- Easy access to conveyor belt from both sides – cover can be fixed in opened position
- Fast attachment and opening through bolt/latch quick release fastener (can be carried out without problems by one person)



- Cover and frame can be quickly removed for inspection and servicing work
- System can be retrofitted to existing conveyor belt installations
- Emission protection requirements can be quickly and costeffectively fulfilled
- Standard dimension per element: 1200 mm
- No tin plate noises, no degradation due to rust

Area of application

- Prevents problems due to dust in conveyor systems and other bulk materials transport systems
- Protects conveyor belt system and bulk materials being transported against weather influences

The REMA TIP TOP cover system offers a fast and effective solution for the enclosure of conveyor belts of any size. Due to its simple construction, the system can easily be fitted to both existing and new conveyors. The frame arches are simply bolted or welded to the conveyor frame and the plastic tarp placed over these, entirely covering the belt. This way, material losses due to wind are effectively avoided and the belt is protected against the effects of weather.

SPILLAGE CONTROL EQUIPMENT  
REMA TIP TOP - A strong partner

Comprehensive industry service

- Rubber Belting
- Drum Lagging
- Conveyor Maintenance
- Chute Lining
- Wear Protection
- Fabrication
- Installation

REMA TIP TOP service depots:

Eastern Division	Doncaster
Midland Division	Stoke-On-Trent
East Anglia Division	Thetford
North West Division	Standish
Western Division	Bristol
South Wales Division	Bridgend
South East Division	Dartford
North East Division	Hartlepool
Scotland Division	Hamilton
Ireland Division	Dublin





Your local contact



// ONE BRAND // ONE SOURCE // ONE SYSTEM

// SERVICE

// MATERIAL PROCESSING

// SURFACE PROTECTION

// AUTOMOTIVE

**REMA TIP TOP INDUSTRY UK LIMITED**

Plumtree Industrial Estate  
Harworth · Doncaster · DN11 3EW

Phone: +44 01302 711233

Fax: +44 01302 711988

[info@tip-top.co.uk](mailto:info@tip-top.co.uk)

[www.rema-tiptop.co.uk](http://www.rema-tiptop.co.uk)



Printed in United Kingdom

